

L-8

Cell - Structure and Functions

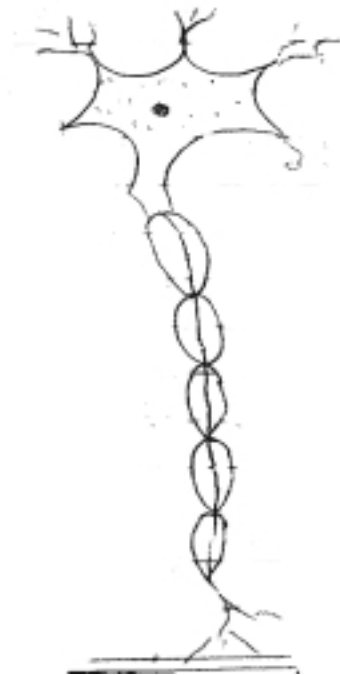
1. Identify the following types of cells :-



----- a)



----- b)



----- (c)

Key - spherical red blood cells of human, nerve cell, Muscle cells

2. The basic unit of life is :

a) Tissue

b) Organ

c) Cell

d) Organ- System

3. The Biggest cell is :

- a) Hen's Egg
- b) Ostrich egg
- c) Nerve cell
- d) None of these

4. Cell which changes its shape :-

- a) Amoeba
- b) WBC
- c) Both of these
- d) None of these

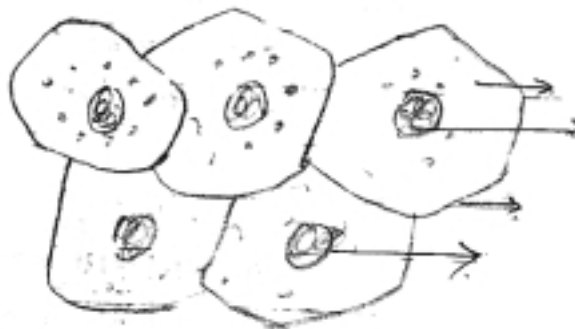
5. Differentiate :-

Animal Cell

Plant Cell

- | | |
|----------|----------|
| 1) | 1) |
| | |
| | |
| 2) | 2) |
| | |
| | |
| 3) | 3) |
| | |
| | |

6. Label the following parts of human cheek cells :-

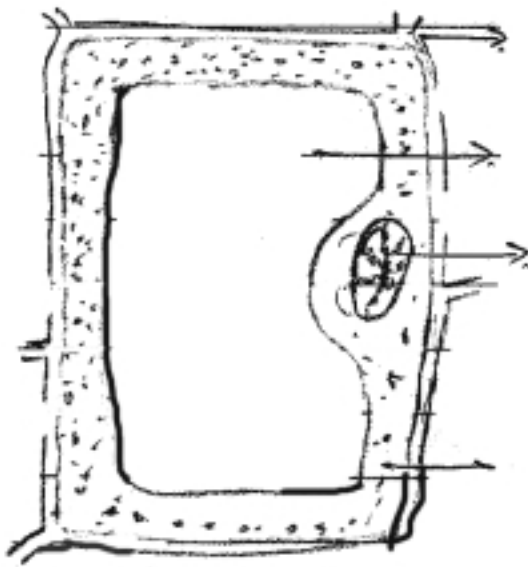


Human cheek cells

7. Give one word for the following :-

- i) Cells having nuclear membrane around the nucleus _____
- ii) Power house of the cell - _____
- iii) Control centre of the cell - _____
- iv) Plastids containing chlorophyll - _____
- v) The membrane which separates nucleus and cytoplasm _____

8. Name different parts of plant cell :-



Plant - Cell